

DESIGNED BY: L.A.L.
 CHECKED BY: A.L.S.
 APPROVED BY: G.F.

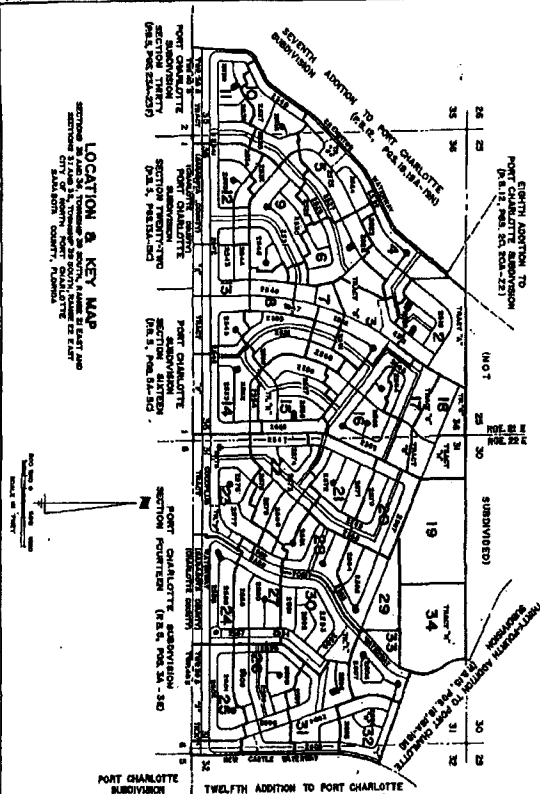
PLAT BOOK 21 43004
 AND PAGE 8

**FIRST ADDITION TO
 PORT CHARLOTTE SUBDIVISION**

DESCRIPTION
 SEC. 35 AND 36, TWP. 39 S., RGE. 21 E. AND SEC. 31 AND 32, TWP. 39 S., RGE. 22 E.
 CITY OF NORTH PORT CHARLOTTE
 SARASOTA COUNTY, FLORIDA
 SHEET 1 OF 34 SHEETS

GENERAL NOTES

1. All lots shown on this plat are subject to the provisions of the City of North Port Charlotte, Florida, Ordinance No. 1987-001, which provides for the creation of a city and the establishment of a city government.
2. The lots shown on this plat are subject to the provisions of the City of North Port Charlotte, Florida, Ordinance No. 1987-002, which provides for the creation of a city and the establishment of a city government.
3. The lots shown on this plat are subject to the provisions of the City of North Port Charlotte, Florida, Ordinance No. 1987-003, which provides for the creation of a city and the establishment of a city government.
4. The lots shown on this plat are subject to the provisions of the City of North Port Charlotte, Florida, Ordinance No. 1987-004, which provides for the creation of a city and the establishment of a city government.
5. The lots shown on this plat are subject to the provisions of the City of North Port Charlotte, Florida, Ordinance No. 1987-005, which provides for the creation of a city and the establishment of a city government.



CERTIFICATE OF OWNERSHIP & DEDICATION
 I, the undersigned, being the owner of the above described property, do hereby certify that the same is as shown on the attached plat, and that the same is dedicated to the public use of the City of North Port Charlotte, Florida, and that the same is subject to the provisions of the City of North Port Charlotte, Florida, Ordinance No. 1987-001, which provides for the creation of a city and the establishment of a city government.

ACKNOWLEDGMENT
 I, the undersigned, being the owner of the above described property, do hereby acknowledge the receipt of the proceeds of the sale of the same, and that the same are being used for the purposes of the City of North Port Charlotte, Florida, and that the same are subject to the provisions of the City of North Port Charlotte, Florida, Ordinance No. 1987-001, which provides for the creation of a city and the establishment of a city government.

SUPERVISOR'S CERTIFICATE
 I, the undersigned, being the Supervisor of the City of North Port Charlotte, Florida, do hereby certify that the above described property is as shown on the attached plat, and that the same is subject to the provisions of the City of North Port Charlotte, Florida, Ordinance No. 1987-001, which provides for the creation of a city and the establishment of a city government.

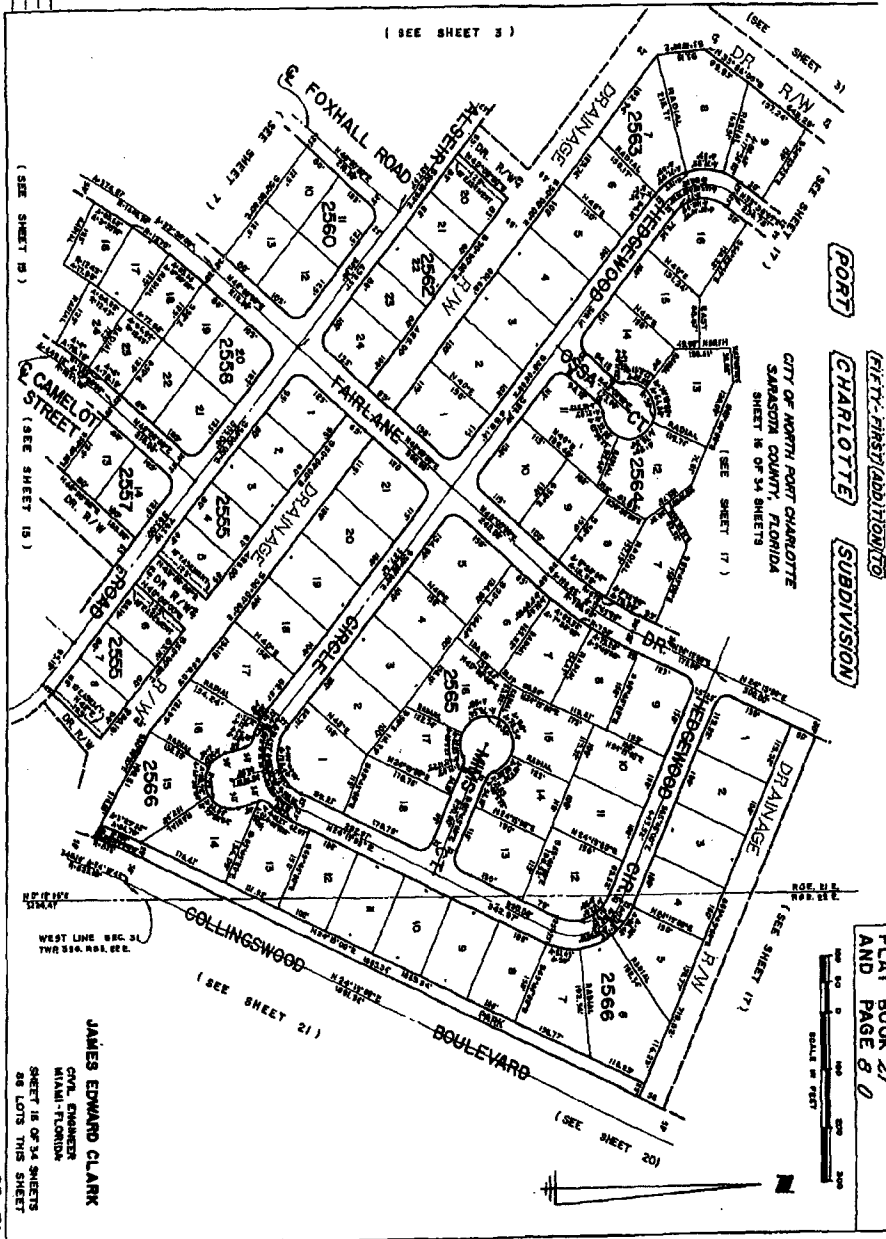
CERTIFICATE OF APPROVAL OF CITY PLANNING ADVISORY BOARD
 I, the undersigned, being a member of the City Planning Advisory Board of the City of North Port Charlotte, Florida, do hereby certify that the above described property is as shown on the attached plat, and that the same is subject to the provisions of the City of North Port Charlotte, Florida, Ordinance No. 1987-001, which provides for the creation of a city and the establishment of a city government.

CERTIFICATE OF APPROVAL OF CITY CLERK
 I, the undersigned, being the City Clerk of the City of North Port Charlotte, Florida, do hereby certify that the above described property is as shown on the attached plat, and that the same is subject to the provisions of the City of North Port Charlotte, Florida, Ordinance No. 1987-001, which provides for the creation of a city and the establishment of a city government.

CERTIFICATE OF APPROVAL OF COUNTY CLERK
 I, the undersigned, being the County Clerk of Sarasota County, Florida, do hereby certify that the above described property is as shown on the attached plat, and that the same is subject to the provisions of the City of North Port Charlotte, Florida, Ordinance No. 1987-001, which provides for the creation of a city and the establishment of a city government.

CS-51

CALCULATED BY: J.E.C.
 DRAWN BY: J.E.C.
 CHECKED BY: J.E.C.
 APPROVED BY: J.E.C.



CITY OF NORTH PORT CHARLOTTE
SARASOTA COUNTY, FLORIDA
PLAT BOOK 21 AND PAGE 80

PLAT BOOK 21
 AND PAGE 80

JAMES EDWARD CLARK
 CIVIL ENGINEER
 MIAMI-FLORIDA
 SHEET 16 OF 34 SHEETS
 88 LOTS THIS SHEET

CS-51

PORT CHARLOTTE SUBDIVISION

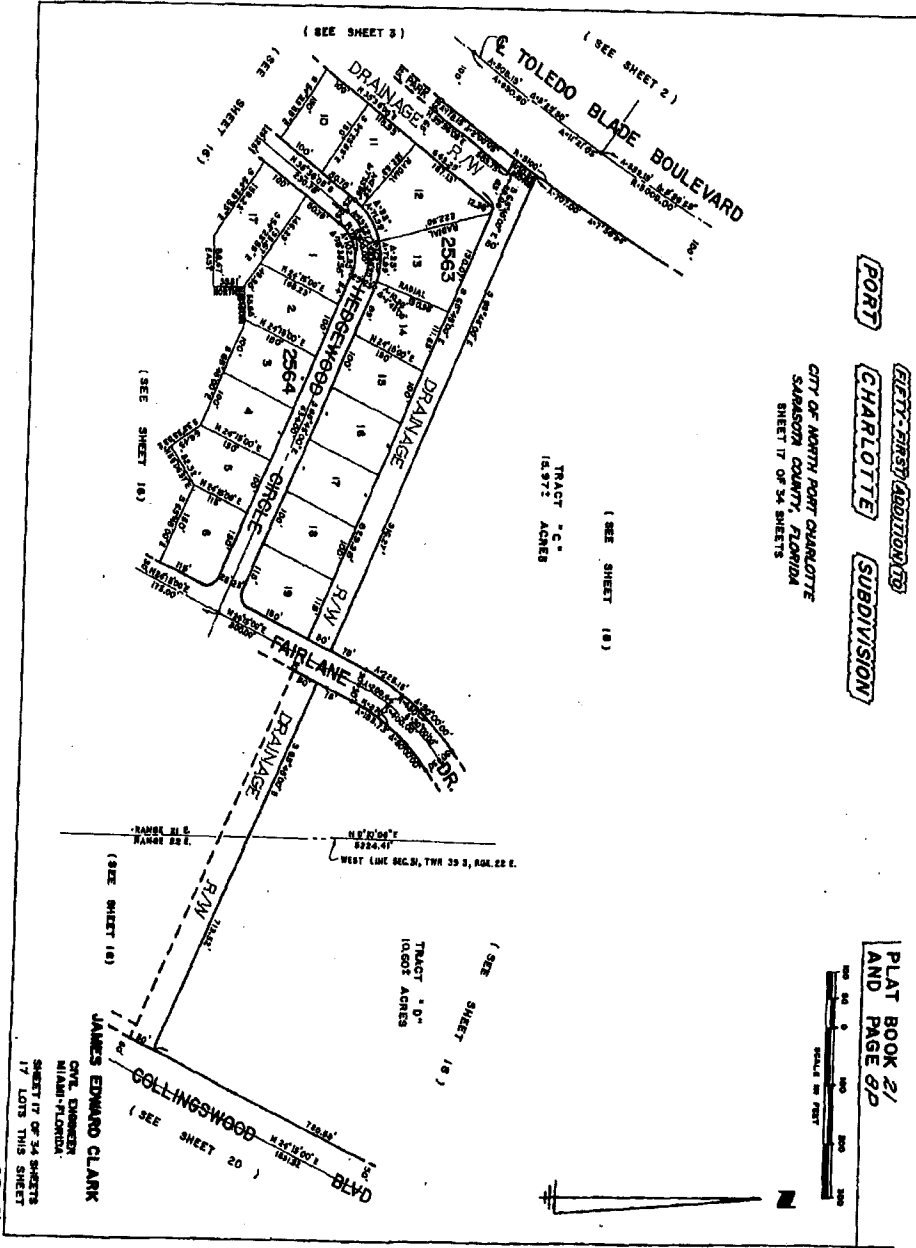
CITY OF NORTH PORT CHARLOTTE
SARASOTA COUNTY, FLORIDA
SHEET 17 OF 24 SHEETS

PLAT BOOK 2/
AND PAGE 6/P



TRACT "C"
18.97 ACRES
(SEE SHEET 18)

TRACT "D"
10.00 ACRES
(SEE SHEET 18)



CALCULATED BY E.A.
DRAWN BY E.A.K.
CHECKED BY J.A.C.
APPROVED BY J.C.

CS-51

JAMES EDWARD CLARK
CIVIL ENGINEER
MIAMI, FLORIDA
SHEET 17 OF 24 SHEETS
17 LOTS THIS SHEET